



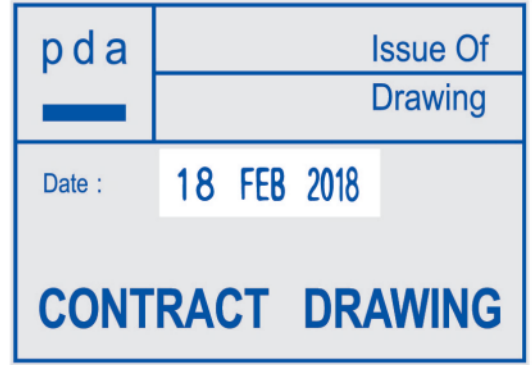
D-5540

max. 53x38mm



D-6040

max. 58x38mm



D-7050

max. 68x48mm



D-21

max. Ø19mm



D-36

max. Ø34mm



D-42

max. Ø40mm



D-51

max. Ø49mm



Hours 12 T-4212
max. Ø42mm



Hours 24 T-4224
max. Ø42mm



Time stamp include 7 optional phrases which are:

- PAID, FAXED,
- ENTERED, RECEIVED,
- BAYAR, TERIMA,
- DESPATCHED



Hours 12 T-5012
max. Ø50mm



Hours 24 T-5024
max. Ø50mm